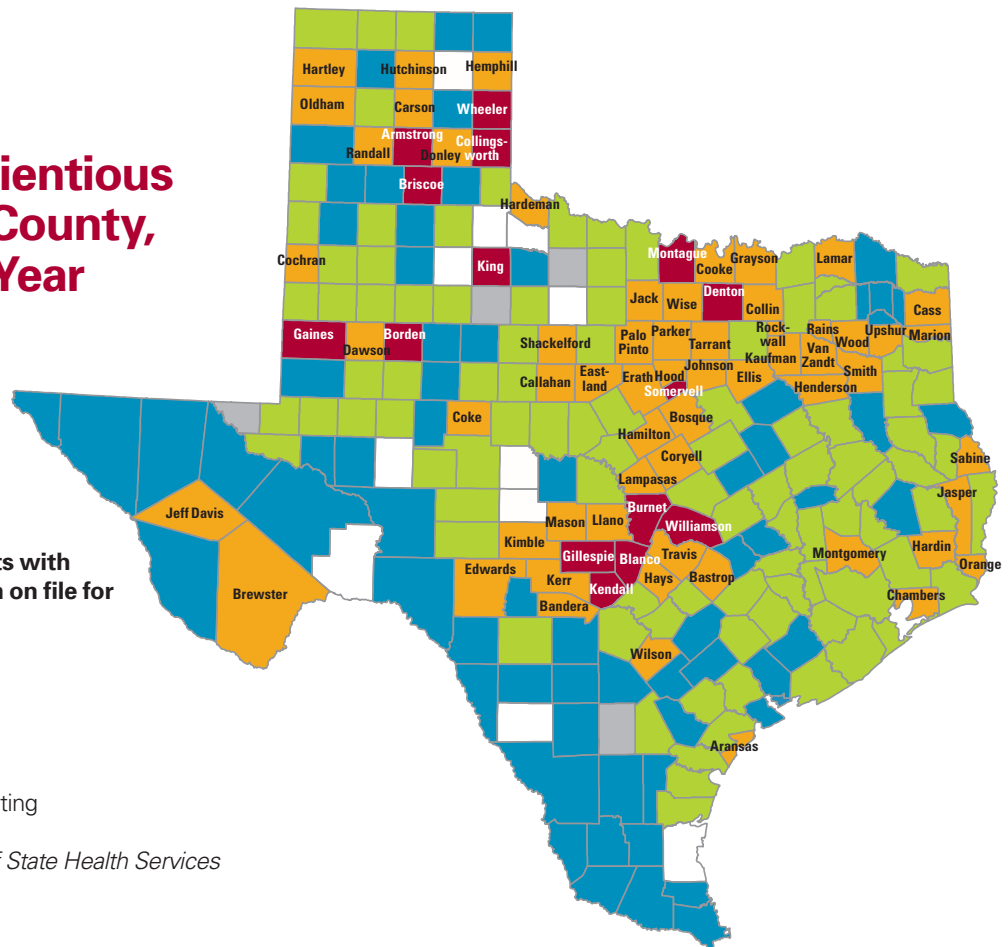


Reported Conscientious Exemptions by County, 2019-20 School Year

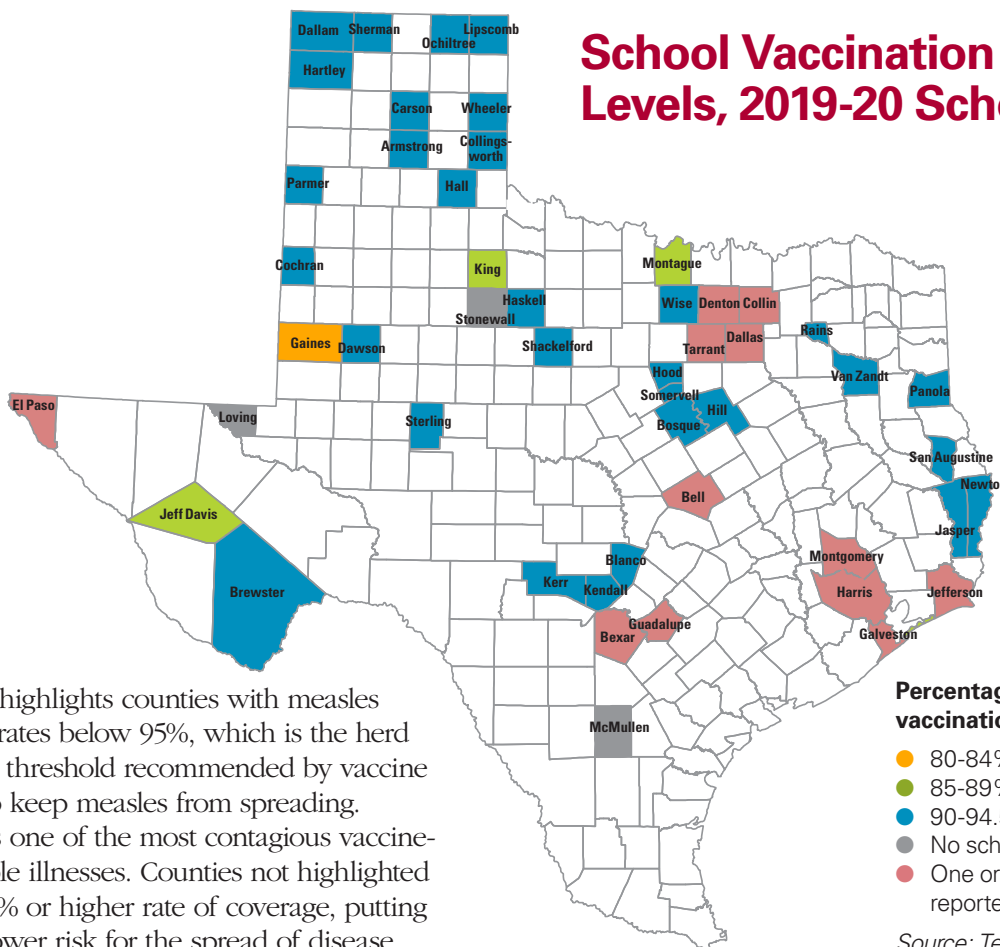
Percentage of K-12 students with a conscientious exemption on file for at least one vaccination

- > 3%
- 1.58-2.99%
- 0.68-1.57%
- 0.01-0.67%
- 0%
- No schools/districts reporting



Source: Texas Department of State Health Services Immunization Unit

School Vaccination Coverage Levels, 2019-20 School Year



The map highlights counties with measles coverage rates below 95%, which is the herd immunity threshold recommended by vaccine experts to keep measles from spreading. Measles is one of the most contagious vaccine-preventable illnesses. Counties not highlighted have a 95% or higher rate of coverage, putting them at lower risk for the spread of disease.

Percentage of up-to-date measles vaccinations among kindergartners

- 80-84%
- 85-89%
- 90-94.5%
- No schools/districts reporting
- One or more cases of measles reported in 2019

Source: Texas Department of State Health Services