

# Introduction to Organized Medicine

Texas Medical Association  
Medical Student Section  
2018 - 2019



## Disclaimer

The content of this powerpoint is taken and/or adapted from source material from the **American Medical Association, Texas Medical Association**, news sources, and resolutions authored by the Texas Medical Association Medical Student Section for the purpose of increasing medical student involvement in organized medicine.



# Outline

- **Organization Overviews**
  - Texas Medical Association
    - What is TMA and TMA-MSS?
  - American Medical Association
    - What is the AMA and AMA-MSS?
- **Anatomy of a Resolution**
  - What is a Resolution?
  - TMA Resolution Writing Process
  - AMA Resolution Writing Process
- **House of Delegates**
- Questions?

# What is the TMA & TMA-MSS?

TMA Delegate Co-Chairs

# Texas Medical Association (TMA)

- **Established in 1853**
- **Largest state medical society**
  - Membership 52,000+
- **Vision**
  - *To improve the health of all Texans*
- **Mission**
  - *Stand up for Texas physicians by providing distinctive solutions to the challenges they encounter in the care of patients*



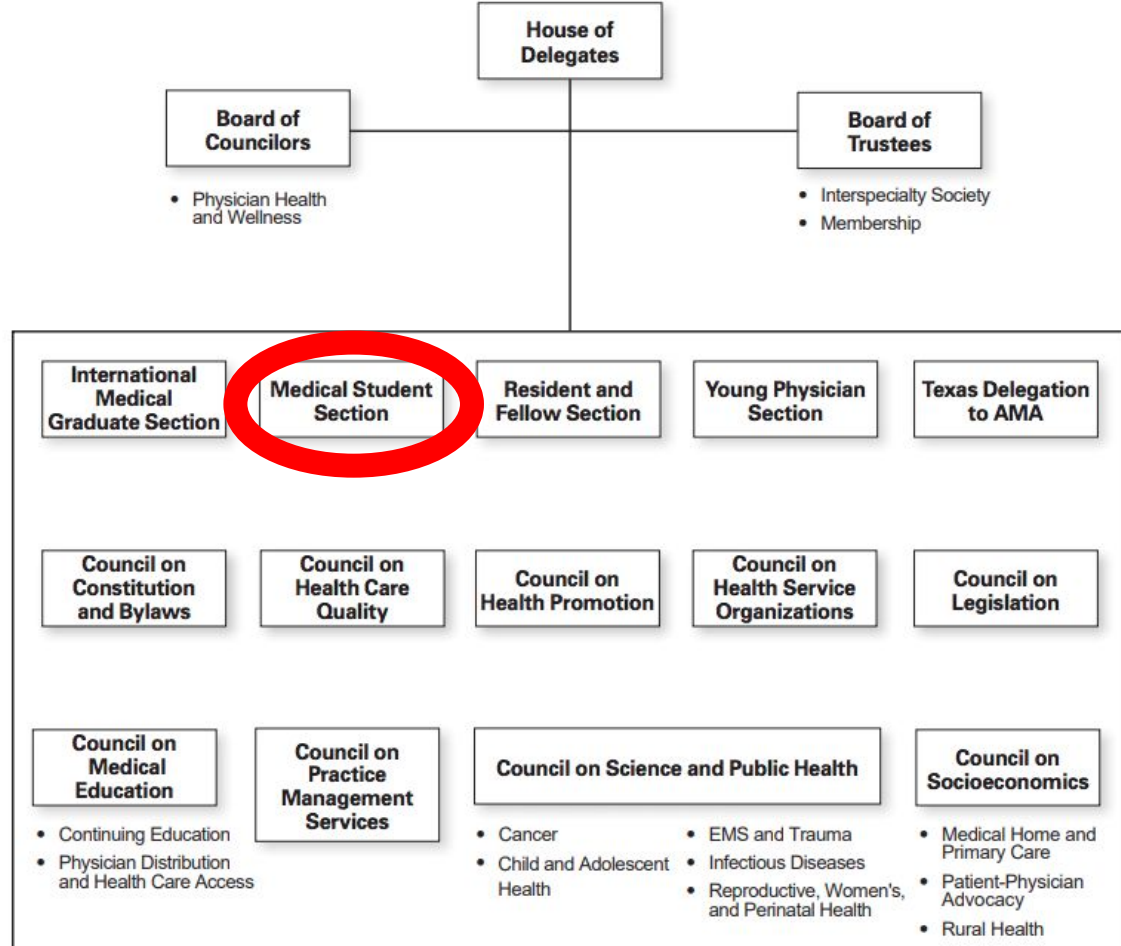
Physicians Caring for Texans

# TMA Medical Student Section (MSS)

- **Created in late 1970s**
- **Purpose**
  - Focus attention on issues unique to Texas' students
  - Provide a forum for students to communicate with each other
- **Membership (2018)**
  - Over 6,600 medical students across 12 medical school chapters
  - Anticipated growth\*



# How the MSS fits into the TMA House of Delegates

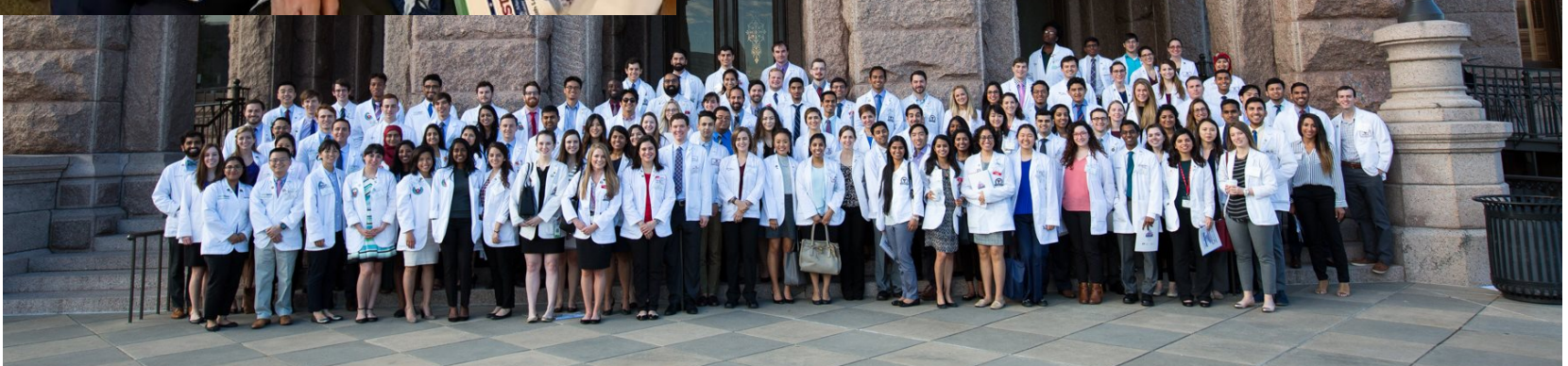


# Benefits of Being a TMA Member

- **Advocacy**
  - First Tuesdays
  - Resolution Writing
- **Career Development**
  - Fall, Winter & TexMed Conferences
  - Networking opportunities
- **Community Outreach**
  - Be Wise, Immunize
  - Hard Hats for Little Heads
  - Walk with a Doc
  - Local medical societies
- **Scholarships & Loans**
  - TMA Foundation Scholarships
  - Other loans and scholarships









# Anatomy of a Resolution

**TMA Delegate Co-Chairs**  
**AMA Delegate Co-Chairs**

# What is a Resolution?

- A written proposal that asks the TMA/AMA or TMA/AMA-MSS to take a position
- The basic “currency” by which the TMA/AMA is able to discuss ideas and ultimately establish policy
- Provides a democratic structure by which a large, diverse organization can come to consensus on important issues
- Empowers individuals or groups within the TMA/AMA to drive actions of the entire organization
- If passed, forms the basis for policies that help guide the TMA/AMA in its activities

# Parts of a Resolution

1. **Authors:** Primary author & co-authors/sponsors who assisted in creation of resolution
2. **Title:** Succinctly states the main issue being addressed

TEXAS MEDICAL ASSOCIATION  
MEDICAL STUDENT SECTION

Resolution:  
(A-17)

Introduced by: Stephen Haff, University of Texas Southwestern Medical School; Christian Davidson, University of Texas Southwestern Medical School; Harris Majeed, University of Texas Southwestern Medical School

Subject: Incorporating High-Value Care into Undergraduate and Graduate Medical Education in Texas

# Components of a Resolution

## 3. Whereas Clauses: Rationale for Resolved Clause(s)

- All start with “Whereas” and ends with “; and”
  - Final clause ends with “; and therefore be it”
- Background information that logically explains why this resolution should become policy
- Cited evidence to support argument (*NOT* opinions)
- Do *NOT* become policy (not listed in policy finder/compendium)

## 4. Resolved Clauses: What becomes policy

- What you want our TMA/TMA-MSS (AMA/AMA-MSS) to do
- Commonly referred to as “Your Ask”



Introduced by: Stephen Haff, University of Texas Southwestern Medical School; Christian Davidson, University of Texas Southwestern Medical School; Harris Majeed, University of Texas Southwestern Medical School

Subject: Incorporating High-Value Care into Undergraduate and Graduate Medical Education in Texas

Whereas, An estimated 20%, or \$765 billion, of health care expenditures may be spent on unnecessary tests and medical procedures<sup>1</sup>; and

Whereas, Overuse of noninvasive radiologic imaging alone accounts for an estimated 0.96-1.75% (\$18-33 billion) of total US health care spending<sup>2</sup>; and

Whereas, 73% of physicians say the frequency of unnecessary tests and procedures is a very or somewhat serious problem<sup>3</sup>; and

Whereas, 58% of physicians report that physicians themselves are in the best position to address the problem<sup>3</sup>; and

Whereas, Physicians and physician scientists increasingly recognize this issue as important and relevant through increased research, with a near doubling in articles on overuse in medical care from 2014 to 2015<sup>4</sup>; and

Whereas, the training environments that medical students are exposed to have long-lasting effects on their practice behavior<sup>5</sup>; and

Whereas, It has been shown that physicians trained in a medical school have lower health care spending as residents have lower-spending patterns as practicing physicians<sup>6</sup>; and

Whereas, the ABIM Foundation, along with nine physician medical societies, have created a list of common diagnostic tests or treatments that have no evidence of meaningful benefit in an effort to control unnecessary spending<sup>7</sup>; and

Whereas, The U.S Choosing Wisely STARS program, a Choosing Wisely program for medical education, was established in 2017 with 25 medical schools nationwide participating in the first year, four of which were Texas medical schools<sup>8</sup>; and

Whereas, medical schools such as Dell Medical School at The University of Texas at Austin have already created an assistant dean-level office for healthcare value education, in addition to resources such as interactive learning modules that any student can access for free to learn the foundational concepts of healthcare value delivery<sup>9</sup>; and

## Resolved Clauses

Whereas, the TMA [265.023] Choosing Wisely Campaign already advocates for the use of the Choosing Wisely campaign among physicians<sup>10</sup>; therefore be it

**RESOLVED**, That our TMA supports the inclusion and integration of topics of health care value in Texas students' medical school and residency education and be it further

**RESOLVED**, That our TMA collaborate with the appropriate parties to make the the Choosing Wisely STARS curriculum or a similar curriculum more widely available in Texas medical school and residency education.

## References

1. Berwick DM, Hackbarth AD. Eliminating waste in US health care. *JAMA*. 2012;307(14):1513-1516.
2. Bentley TGK, Effros RM, Palar K, Keeler EB. Waste in the U.S. Health Care System: A Conceptual Framework. *Milbank Quarterly*. 2008;86(4):629-659.
3. Research PU. Unnecessary Tests and Procedures in the Health Care System. Survey presented at; May 1, 2014, 2014.
4. Morgan DJ, Dhruva SS, Wright SM, Korenstein D. 2016 Update on Medical Overuse: A Systematic Review. *JAMA Internal Medicine*. 176(11):1687-1692.
5. Ryskina KL, Halpern SD, Minyanou NS, Goolid SD, Tilbrun JC. The Role of Training Environment Care Intensity in US Physician Cost Consciousness. *Mayo Clin Proc*. 2015;90(3):313-320. doi:10.1016/j.mayocp.2014.12.005.
6. Chen C, Petterson S, Phillips R, Bazemore A, Mullan F. Spending patterns in region of residency training and subsequent expenditures for care provided by practicing physicians for medicare beneficiaries. *JAMA*. 2014;312(22):2385-2393. doi:10.1001/jama.2014.15973.
7. Hoverman JR. Getting From Choosing Wisely to Spending Wisely. *Journal of Oncology Practice*. 2014;10(3):223-225.
8. STARS aims to catalyze grassroots, student-led initiatives to advance health care value in medical education. 2015; <http://consumerhealthchoices.org/stars>.
9. Discovering Value-Based Health Care Modules. 2017; [www.vbhc.dellmed.utexas.edu](http://www.vbhc.dellmed.utexas.edu).
10. Foundation A. Choosing Wisely Facts and Figures. 2012; <http://www.choosingwisely.org/our-mission/facts-and-figures/>.

## RELEVANT TMA POLICY:

### 265.023 Choosing Wisely Campaign:

Choosing Wisely® Campaign: The Texas Medical Association advocates the adoption of the Choosing Wisely campaign (CHCQ Rep. 1-A-13).

## References

### 110.002 Cost Effectiveness:

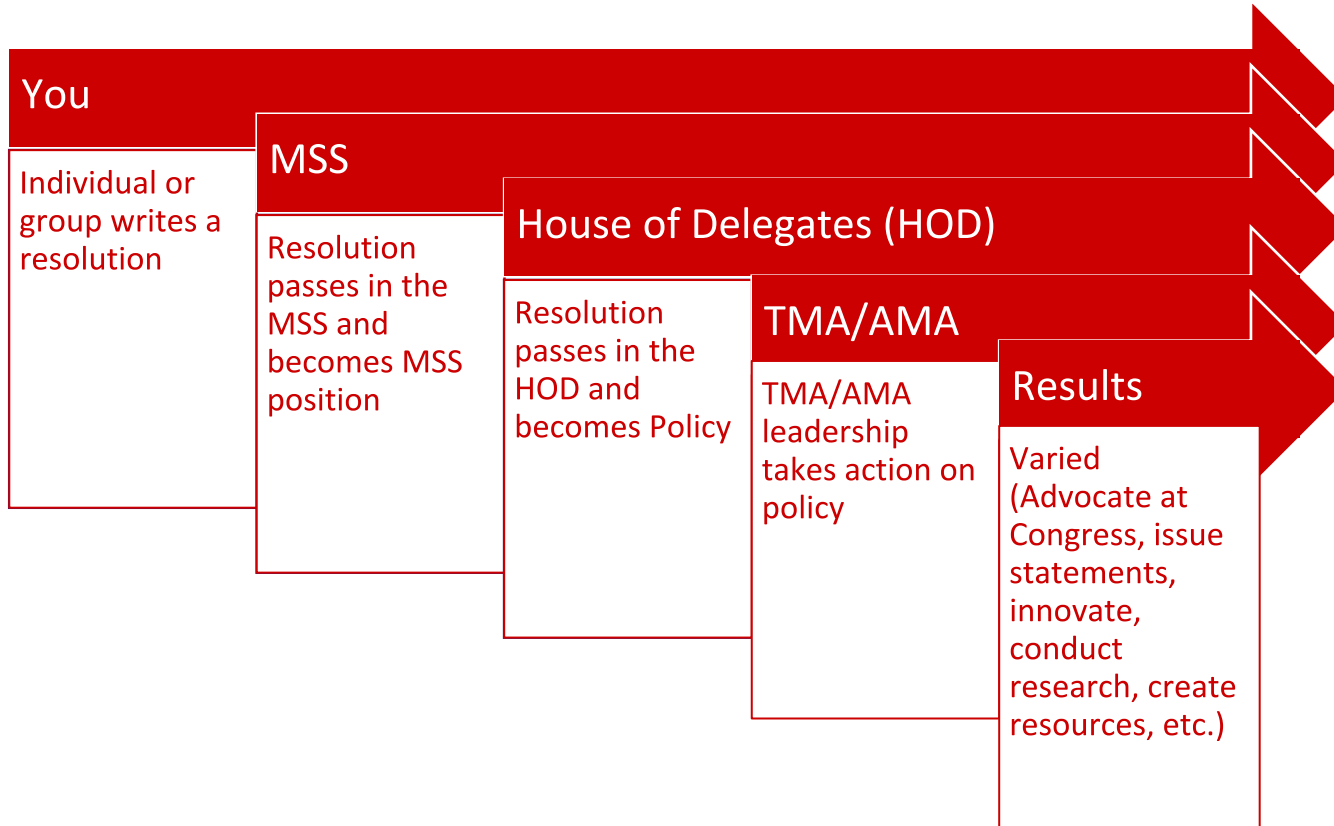
Cost Effectiveness: The Texas Medical Association encourages physicians to become knowledgeable of the actual costs of services they order on behalf of patients in order to join their patients in decisions for the most cost effective expenditures of dollars for quality health care (Amended Res. 28CC, p 179G, A-93; amended CSE Rep. 6-A-03; amended CSE Rep. 1-A-13).

### 200.020 Medical education curriculum:

Medical Education Curriculum: Medical schools should incorporate in their curricula a broad range of educational opportunities and perspectives, not exclusively related to the basic sciences (Council on Medical Education, p 90, A-94; amended CME Rep. 4-A-04; amended CME Rep. 2-A-14).

## Relevant TMA/AMA Policy

# How a Resolution Becomes New Policy





# **The Resolution Writing Process in TMA**



## Check Current TMA Policy

- Before you start, always do a thorough search of existing TMA policy to see what already exists
- Link to [TMA Policy Compendium Finder](#)
- This will ensure that your resolution is novel & adds value to existing policy
- It will also provide context to demonstrate where policy gaps exist & whether your resolution is contradictory or a significant departure from past policy

# Develop Rationale – Whereas Clauses

- Each Whereas clause should be one sentence long & make one independent statement that supports the Resolved clause
- Each Whereas clause should ideally contain at least one reliable & recent citation
- After a resolution is passed, the Whereas clauses are discarded and only the title & Resolved clause(s) are retained as official policy
- Why is this a TMA/TMA-MSS issue? Why is the TMA/TMA-MSS best equipped to handle or address this issue?
- Why is medical student (TMA-MSS) involvement in this issue important? Why should the MSS be the group taking this to the TMA House of Delegates?

# Develop Policy Stance or Action – Resolved Clauses

- Each Resolved clause should stand by itself both in grammar & content
- The ask of each Resolved clause should be unambiguous
- The verbiage of Resolved clauses matters significantly
- What is your ultimate intention for your resolution?
- Strong Resolved clauses are clear in intent and specific – they can be as narrow as asking the TMA to support an individual action or as broad as asking the TMA to support certain principles regarding a larger topic

# Tips for Writing Resolves: Verbiage

Word	Variety of resulting action	Commonly Associated Fiscal Note**
Advocate	High	Significant
Collaborate/Work with appropriate stakeholders	High	Significant
Create materials/Programs	Moderate	Significant
Encourage	High	Moderate
Study/Research	Moderate	Moderate
Report back	Low	Moderate
Support	Low	Minimal
Oppose	Low	Minimal



# **Next Steps, Reference Committee (RefCom), & House of Delegates (HOD)**

# Next Steps

- 1) Format your resolution using the TMA-MSS Resolution Template
- 2) Submit Draft Resolution
- 3) Apply Feedback and Improve Resolution
- 4) Submit Final Resolution

TEXAS MEDICAL ASSOCIATION  
MEDICAL STUDENT SECTION

Resolution:  
(A-17)

Introduced by: Stephen Haff, University of Texas Southwestern Medical School; Christian Davidson, University of Texas Southwestern Medical School; Harris Majeed, University of Texas Southwestern Medical School

Subject: Incorporating High-Value Care into Undergraduate and Graduate Medical Education in Texas

Whereas, An estimated 20%, or \$765 billion, of health care expenditures may be spent on unnecessary tests and medical procedures<sup>1</sup>; and

Whereas, Overuse of noninvasive radiologic imaging alone accounts for an estimated 0.96-1.75% (\$18-33 billion) of total US health care spending<sup>2</sup>; and

Whereas, 73% of physicians say the frequency of unnecessary tests and procedures is a very or somewhat serious problem<sup>3</sup>; and

Whereas, 58% of physicians report that physicians themselves are in the best position to address the problem<sup>3</sup>; and

Whereas, Physicians and physician scientists increasingly recognize this issue as important and relevant through increased research, with a near doubling in articles on overuse in medical care from 2014 to 2015<sup>4</sup>; and

Whereas, the training environments that medical students and residents are exposed to have long-lasting effects on their practice behaviors<sup>5</sup>; and

Whereas, It has been shown that physicians trained in areas with lower health care spending as residents have lower-spending patterns as practicing physicians<sup>6</sup>; and

Whereas, the ABIM Foundation, along with nine physician medical societies, have created a list of common diagnostic tests or treatments that have no evidence of meaningful benefit in an effort to control unnecessary spending<sup>7</sup>; and

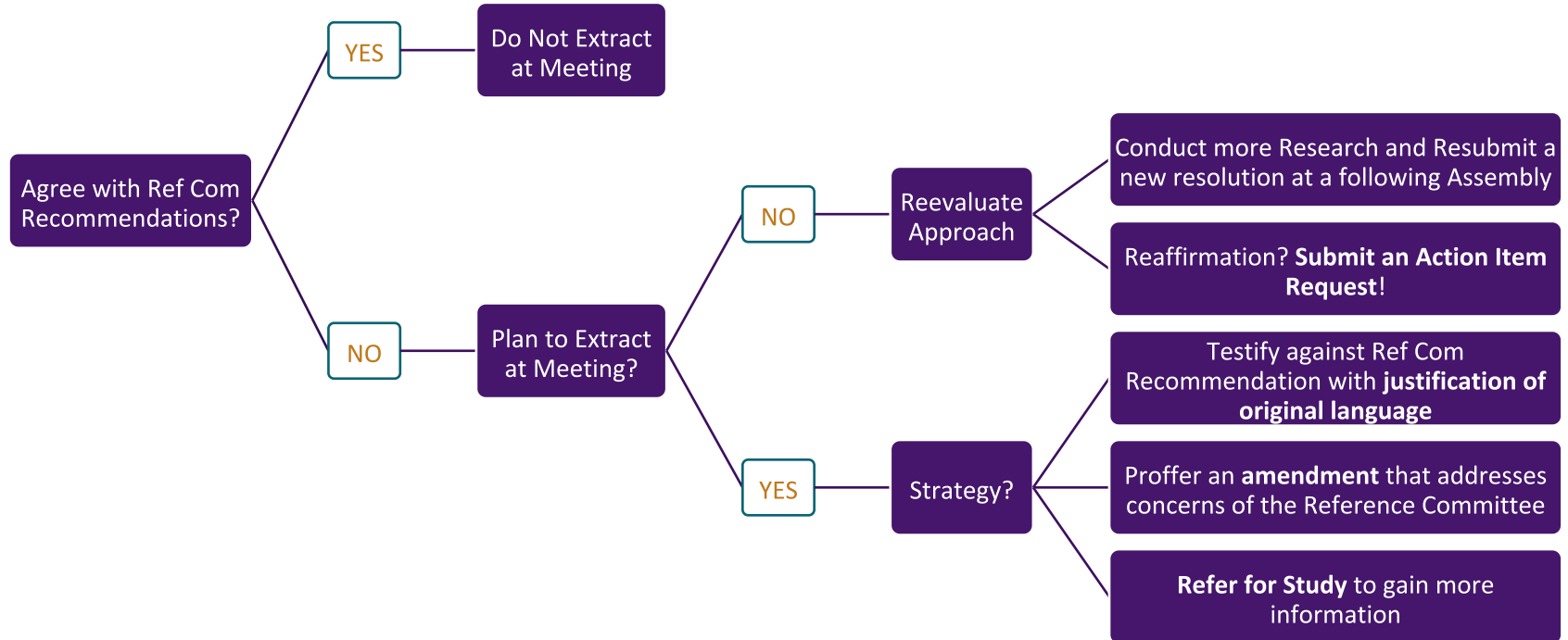
Whereas, The U.S Choosing Wisely STARS program, a Choosing Wisely program for medical education, was established in 2017 with 25 medical schools nationwide participating in the first year, four of which were Texas medical schools<sup>8</sup>; and

Whereas, medical schools such as Dell Medical School at The University of Texas at Austin have already created an assistant dean-level office for healthcare value education, in addition to resources such as interactive learning modules that any student can access for free to learn the foundational concepts of healthcare value delivery<sup>9</sup>; and

# Reference Committee

- Composed of a group of experienced members who provide recommendations for each resolution to the HOD in the form of a report
- Possible Recommendations:
  - Adopt: Resolved clause(s) become(s) official TMA Policy as written
  - Not Adopt: Resolved clauses do not become policy
  - Adopt as Amended: Resolved clauses become official TMA Policy with addition, deletion, or alteration of one or more Resolved clauses
  - Referred: More evidence needed before creating policy

# TexMed 2019





## Policies Crafted by the TMA-MSS at the 2018 TexMed Meeting Included:

- Inclusion of Medical Students in Good Samaritan Laws and Policies for Disaster Settings
- Incorporating High-Value Care into Undergraduate and Graduate Medical Education in Texas
- Addressing Gender Bias in Undergraduate Medical Education with Implicit Bias Training
- Synthetic Cannabis Educational Resources for Providers
- Texas Prescription Drug Monitoring Program Data Integration into Electronic Health Record Technology
- Encouraging Unstructured Playtime in School
- Opposition to Pain Score as Contributor to Hospital Financial Incentives

**And more!**



# Texas providers: Man hurting Medicaid pati businesses

## STATE-GOVERNMENT

By Julie Chang - American-Statesman Staff



other health care professionals with the tools they need to ensure that no mother dies because of childbirth."

## Blue Cross Blue Shield of Texas' Controversial ER Claims Process Begins

Backlash to the review change caused a two month delay, after physicians voiced concern to the Texas Department of Insurance

ALLISON LEE | AUGUST 6, 2018, 10:59 AM (LAST UPDATED: AUGUST 6, 2018, 6:49 PM)

Share



The largest health insurer in Texas changed an ER claims review process Monday.

[Blue Cross Blue Shield of Texas](#) said its 500,000 HMO members may have to pay the entire cost of an out-of-network emergency room bill, if they go for something not serious or life-threatening.

The insurance carrier said the stricter review policy is designed to help make health care costs more affordable. In an April 18 memo, Blue Cross first explained the change by pointing to examples of people who use out-of-network ERs for things like head lice or sprained ankles.

[In our recent News 88.7 In Depth](#), we reported backlash from physicians in Texas prompted the insurance company to delay rolling out the new change.

In a statement provided to Houston Public Media, the Texas Medical Association said it's disappointed Blue Cross Blue Shield of Texas is moving ahead with the change.

"Unfortunately, even the announcement of this plan has already planted a seed in patients' minds that they'll be left with a big bill if they go to the emergency room for the 'wrong reason,'" said TMA President Dr. Douglas Curran. "We encourage TDI to join us in monitoring this closely to make sure no patients are denied necessary care."

[Eliminating maternal mortality](#)

Carlos J. Cardenas, MD, TMA's

# What is the AMA & AMA-MSS?

AMA Delegate Co-Chairs

# American Medical Association (AMA)

- A national organization dedicated to empowering the nation's physicians and medical students to continually provide safe, high quality, and more efficient care for patients and communities
- Helps give us a **voice** so that we can inform, guide and generate support for policies that affect our patients and our profession

Medical Education  
Telemedicine  
Grassroots Advocacy  
Access to Coverage  
Healthcare Reform Save GME  
Our Profession  
Opioid Epidemic  
Our Patients  
Leadership  
Drug Pricing Transparency  
Quality  
Innovation

# American Medical Association: Healthcare bill violates the 'do no harm' standard



Mark Abadi



Jun. 26, 2017, 2:21 PM 10,492



FACEBOOK



LINKEDIN



TWITTER



EMAIL



PRINT

**Bitcoin is Dead - This Will Make Investors Rich ...**

(Bonner and Partners Subscription)

**The Highest Paying Cash Back Card Has Just ...**

(Credit.com)

**Folks Discover a Simple Cure to Snoring Witho...**

(My Snoring Solution)

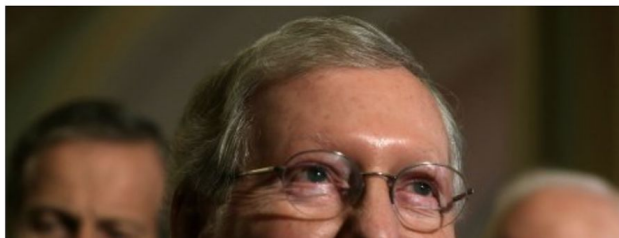
**Get 12 Months Of Free, Popular Services**

(Microsoft Azure)

Sponsored Links

In  
th  
Med  
syst  
pati

The largest group of physicians in the country slammed the Senate's healthcare bill on Monday, warning that the legislation fails to protect "their most vulnerable citizens."



m

m

lit

re

ger

ig

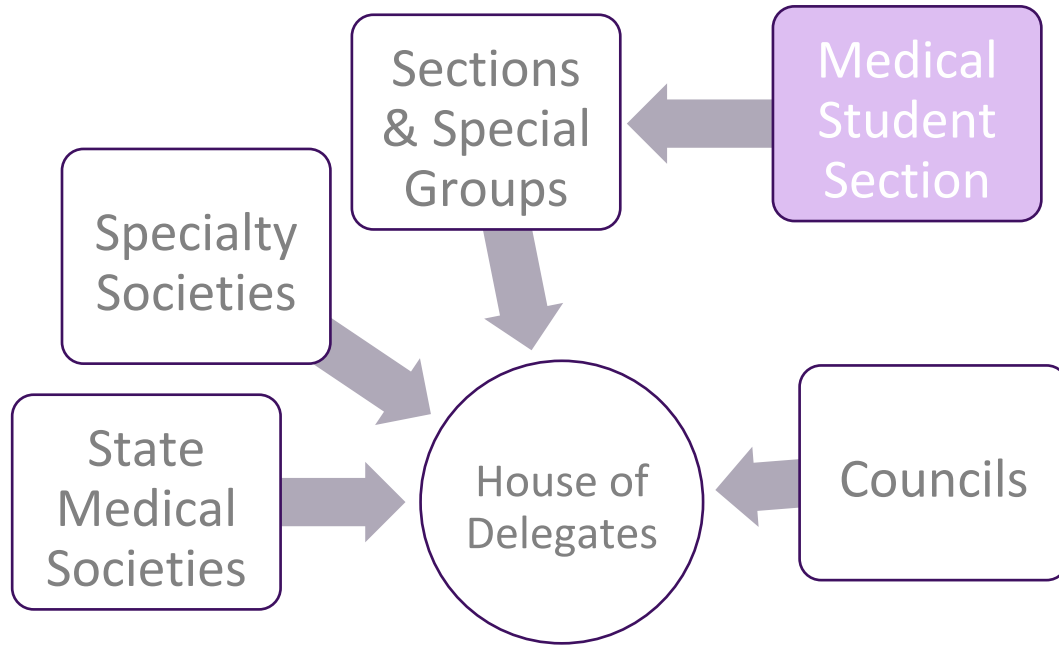
or a

CEO

e

all  
plete  
in  
ell as

# How the Medical Student Section fits into the AMA House of Delegates

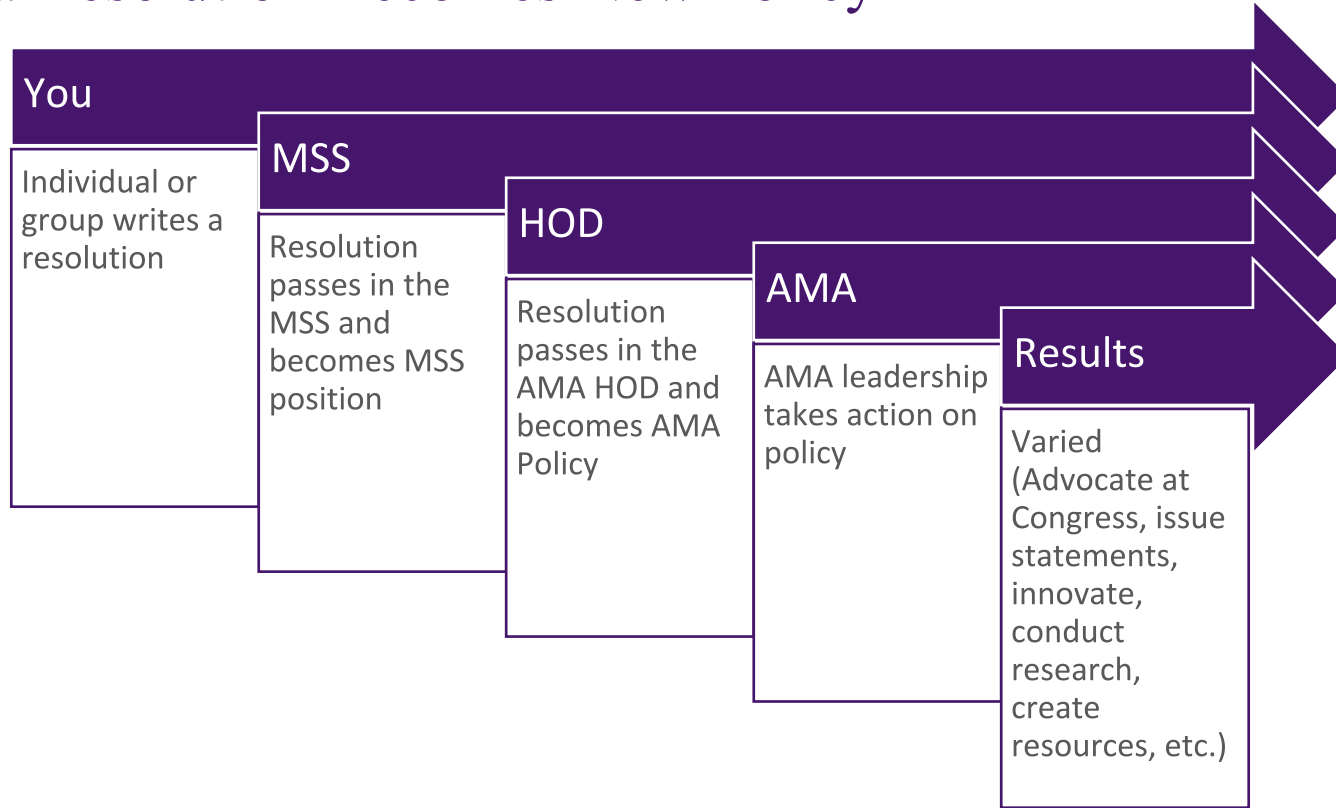


- The Medical Student Section(MSS) is one of 170 different groups that comprise the AMA House of Delegates
- Over 55,000 members
- The MSS Assembly includes delegates from each LCME- and COCA-accredited medical school, satellite campuses, and national medical student organization



# **The Resolution Writing Process in AMA**

# How a Resolution Becomes New Policy





# AMA Resolution Writing Processes Without TMA Equivalents

- Internal vs External AMA-MSS Resolution
  - Internal: resolutions written with goal of being adopted by the AMA-MSS only
  - External: resolutions written with goal of being adopted by the entire AMA
- The Open Forum
  - Posting of resolution ideas for critique by AMA-MSS members is required
- Virtual Reference Committee
  - Can post testimonies for or against resolutions before AMA-MSS RefCom makes its final recommendations
- Action Item Request
  - For internal resolutions only, asking the Governing Council to make known MSS' stance on an issue when it comes up in current events.
  - Must submit a request each time via an online submission form.

# Resolution Idea Brainstorming: The Open Forum


- The Open Forum allows collaboration and an opportunity to get feedback on ideas prior to writing a resolution
- **Posting is required**
- Submit your idea under the correct meeting heading and topic category
- Stay tuned for future deadlines for our upcoming Annual 2019 Meeting!

Home → Forums → Sections → Medical Student Section

## Open Forum

Search Terms	Search Specific Forum	Resolution
<input type="text"/>	<input type="text" value="- Any -"/>	<input type="text"/>
Title	<input type="text"/>	
<input type="button" value="Apply"/>		

[PDF version](#)

Open Forum				
	Forum	Topics	Posts	Last post
	<b>A-18</b> Subforums: <a href="#">Legislation and Advocacy</a> (0), <a href="#">Medical Education</a> (0), <a href="#">Medical Practice</a> (0), <a href="#">Medical Service</a> (0), <a href="#">Public Health</a> (0), <a href="#">Science and Technology</a> (0)			

# Check Current AMA Policy and AMA-MSS Digest of Policy Actions

- Before you start, always do a thorough search of existing AMA and AMA-MSS policy to see what already exists
- Link to [AMA Policy Finder](#)
- Link to [AMA-MSS Digest](#)
- This will ensure that your resolution is novel and adds value to existing policy
- It will also provide context to demonstrate where policy gaps exist and whether your resolution is contradictory or a significant departure from past policy

## Already Policy? Submit an Action Item Request!

- If there is sufficient existing AMA-MSS or AMA policy on the issue, you can request the AMA-MSS to act on those policies
- Link to [GC Action Item Request Form](#)



# **Next Steps, Reference Committee (RefCom), & House of Delegates (HOD)**

# Next Steps

- 1) Format your resolution using the AMA-MSS Resolution Template
- 2) Submit Draft Resolution
- 3) Apply Feedback & Improve Resolution
- 4) Submit Final Resolution & Receive Resolution Score
  - Resolution score determines the order in which it is considered by the MSS Assembly

AMERICAN MEDICAL ASSOCIATION MEDICAL STUDENT SECTION

Resolution X  
(A-18)

Introduced by: Regions (if applicable); Societies (if applicable); Primary Author, Author, Author, Author's School;

Subject: Title

Referred to: MSS Reference Committee  
(Leave Blank, Chair)

---

1  
2 Whereas, These supporting clauses should Stand Alone;<sup>1</sup> and  
3  
4 Whereas, All font should be Arial, Size 11;<sup>2</sup> and  
5  
6 Whereas, While flexible, Whereas clauses should only take up approximately one page of the  
7 Resolution which means it's important they are succinct and effectively progressing the  
8 argument<sup>3</sup>, and be it further,  
9  
10 RESOLVED, Resolves should stand on their own meaning they should not explicitly reference  
11 previously stated points, and should not have any acronyms (with the exception of AMA and  
12 AMA-MSS); and be it further  
13  
14 RESOLVED, When stating a current policy, the title should be included such as D-310.949, Title  
15  
16 Title of Policy to be Amended, H-100.000  
17  
18 If amending, the policy should be indented .5" on both the left and right and in  
19 'justified' alignment. ~~Portions to be deleted should be struck.~~ Portions to be  
20 added should be underlined.

Fiscal Note: Leave Blank

Date Received: DATE OF SUBMISSION in format MM/DD/YY

**RELEVANT AMA AND AMA-MSS POLICY**

AMA Policy First

MSS Policy Second

---

<sup>1</sup> NEW TO A-18: Please Utilize Footnotes for all references.  
<sup>2</sup> All footnotes should be Arial, Size 9  
<sup>3</sup> Footnotes citing References should use the APA reference format

# Reference Committee

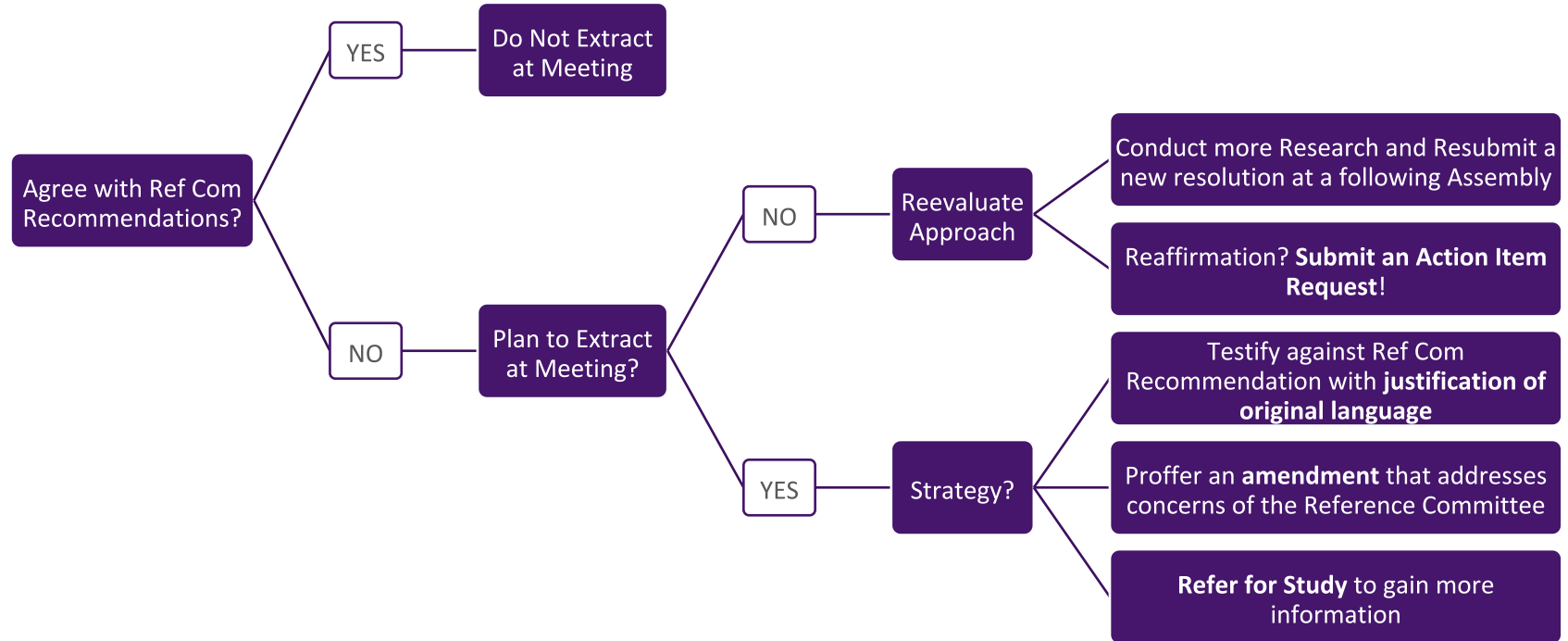
- Composed of a group of experienced members who provide recommendations for each resolution to our General Assembly in the form of a report
- Possible Recommendations:
  - Adopt: Resolved Clause(s) become(s) Official AMA Policy as written
  - Not Adopt: Resolved Clauses do not become policy
  - Adopt as Amended: Resolved Clauses become Official AMA Policy with addition, deletion, or alteration of one or more RESOLVED clauses
  - Reaffirmed in Lieu of: Existing policy is supported instead of adopting new policy
  - Refer for Study: More evidence needed before creating policy

# Virtual Reference Committee (VRC)

- An online forum where all AMA-MSS members can post testimony on resolutions prior to release of the Reference Committee's report
- Posted testimony is then taken into consideration by the Reference Committee when deciding their recommendation
- The House of Delegates has both an online VRC as well as an in-person Reference Committee Hearing
- Parliamentary procedure applies despite online modality



# Next steps: What do you do at the meeting?



# Resolutions Authored by the Medical Student Section

## Medical Education

### Medical Student Involvement and Validation of the Standardized Video Interview Implementation D-310.949

**Topic:** Medical Education

**Meeting Type:** Interim

**Action:** NA

**Council & Committees:** NA

**Policy Subtopic:** Graduate

**Year Last Modified:** 2017

**Type:** Directives



Our AMA: (1) will work with the Association of American Medical Colleges and its partners to advocate for medical students and residents to be recognized as equal stakeholders in any changes to the residency application process, including any future working groups related to the residency application process; (2) will advocate for delaying expansion of the Standardized **Video Interview** until data demonstrates the Association of American Medical Colleges' stated goal of predicting resident performance, and make timely recommendations regarding the efficacy and implications of the Standardized **Video Interview** as a mandatory residency application requirement; and (3) will, in collaboration with the Association of American Medical Colleges, study the potential implications and repercussions of expanding the Standardized **Video Interview** to all residency applicants.

#### Policy Timeline



Res. 960, I-17

- If a resolution passes, becomes official MSS policy-listed in MSS Compendium
- Externally written AMA-MSS resolutions will then be forwarded at the next AMA meeting to the House of Delegates
- Resolutions in the House of Delegates undergo a similar process to the AMA-MSS
- If resolution passes House of Delegates, it becomes official AMA policy
  - Listed in policy finder
- Internal Resolutions pertain to the AMA-MSS specific actions whereas External Resolutions pertain to the AMA as a whole

# See How Members Move Medicine!

## Policies Crafted by the AMA-MSS at the 2018 Annual Meeting Included:

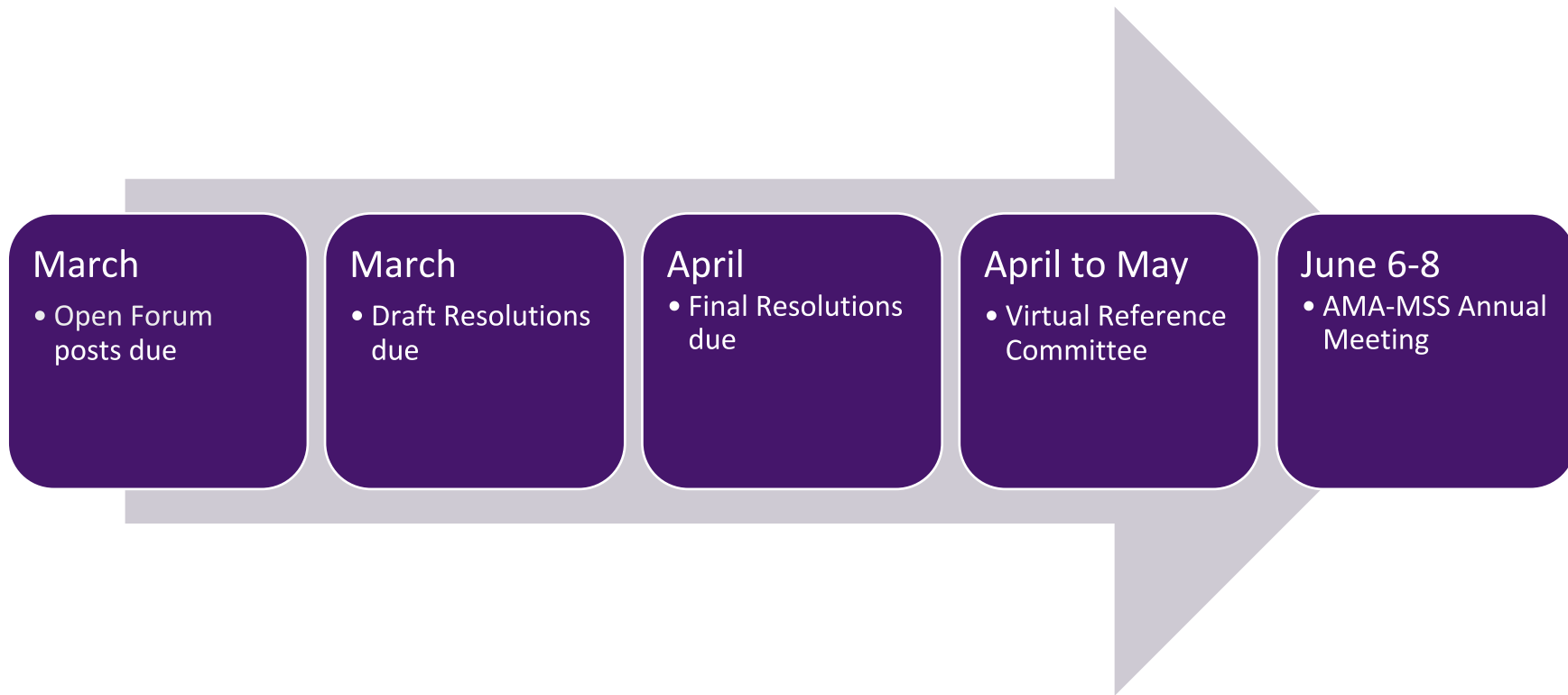
- Support Mental Health Screenings for Detained Minority Youth
- Support of Supplemental Nutrition Assistance Program (SNAP) Education Programs and Research:
- Machine Intelligence and Physician Data Science Literacy
- Addressing Student Debt in Medical School Attrition Due to Mental Illness

And more!



OPEN FORUM FOR  
ANNUAL 2019 IS NOW  
OPEN!!!!

# Resolution Timeline for AMA-MSS Annual 2019



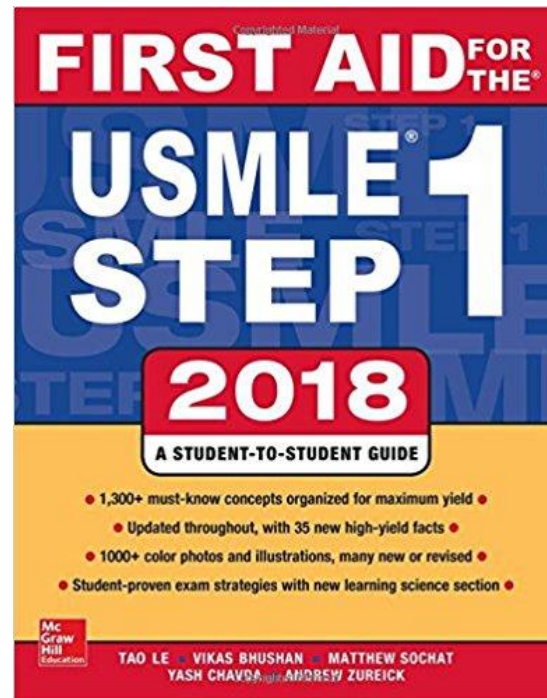
# Writing resolutions for both TMA & AMA?

- It is possible to write a resolution that can carry its weight through both the TMA & AMA if a resolution is timely & relevant
- If a resolution is passed at the TMA HOD, it can be presented to the AMA HOD by the Texas Delegation, thus bypassing the AMA-MSS!



## Not an AMA Member? Join Today!

- \$68 for a four year membership
- Save up to 30% on USMLE test prep
- Other benefits include full access to the JAMA Network, FREIDA Online, discounts on car rental services, and more!



# Questions?

## **TMA Delegate Co-Chairs**

- Alice Jean -- UT Southwestern, [alice.jean@utsouthwestern.edu](mailto:alice.jean@utsouthwestern.edu)
- Pruthali Kulkarni -- UNTHSC-TCOM, [pruthali.kulkarni@my.unthsc.edu](mailto:pruthali.kulkarni@my.unthsc.edu)

## **AMA Delegate Co-Chairs**

- Donald Egan -- UT Health San Antonio, [egand@livemail.uthscsa.edu](mailto:egand@livemail.uthscsa.edu)
- Ky Viet D. Quach -- TCOM, [kyviet.quach@my.unthsc.edu](mailto:kyviet.quach@my.unthsc.edu)

Further avenues of communication for these preliminary discussions include:

- [TMA-MSS Facebook Group](#)
- [AMA-MSS Region 3 Facebook Group](#)
- [TMA-MSS Facebook Page](#)
- [AMA Med Students Facebook Group](#)
- Chapter Leadership